

Anti-SEZ6 hlgG1 Reference Antibody (ABBV-011)

Product Information

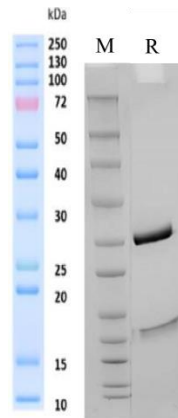
Product Name	Anti-SEZ6 hlgG1 Reference Antibody (ABBV-011)
Storage temp.	Store at 2-8°C short term (1-2 weeks).Store at $\leq -20^{\circ}\text{C}$ long term. Avoid repeated freeze-thaw.
Catalog# / Size	GM-86892MAB-1mg / 1 mg GM-86892MAB-5mg / 5 mg GM-86892MAB-25mg / 25 mg GM-86892MAB-50mg / 50 mg GM-86892MAB-100mg / 100 mg

Antibody Information

Expression System	CHO
Aggregation	< 5% as determined by SEC-HPLC
Purity	> 95% as determined by SDS-PAGE
Endotoxin	< 1 EU/mg, determined by LAL gel clotting assay
Sterility	0.2 μm Filtered
Target	SEZ6
Clone	ABBV-011
Alternative Names	BSRPC
Source/Isotype	Human IgG1(C220S), Kappa
Application	Flow cytometry
Description	Seizure 6 is a gene involved in the function of the nervous system and is mainly expressed in the brain. It encodes a membrane protein that may play an important role in the development and function of neurons.
Formulation	phosphate-buffered solution, pH 7.4.

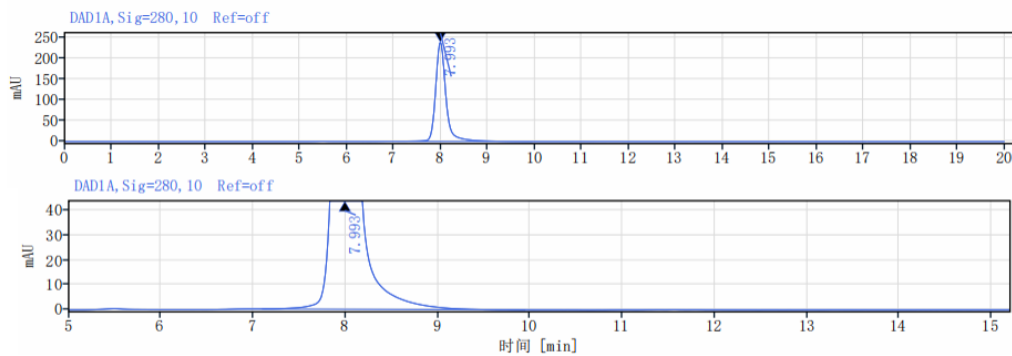
Data Examples

SDS-PAGE



On SDS-PAGE under reducing (R) condition. The purity of the protein is greater than 95%.

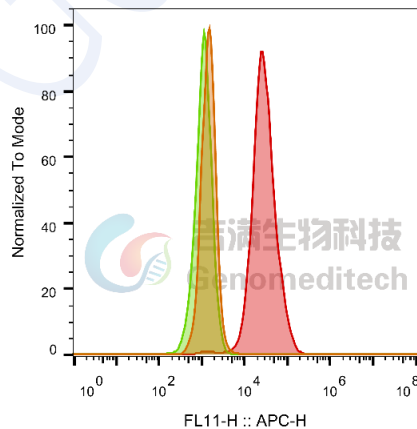
SEC-HPLC



The purity of this product is more than 95% verified by SEC-HPLC

Flow cytometry

H_SEZ6 HEK-293 Cell Line (Catalog # GM-C36533) was stained with Anti-SEZ6 hlgG1 Reference Antibody (ABBV-011) (Catalog # GM-86892MAB) or isotype control antibody, followed by anti-Human IgG APC-conjugated Secondary Antibody.



SampleID	Geometric Mean : FL11-H
HEK-293 anti-SEZ6+APC-2nd Ab	1460
HEK-239 H_SEZ6 H_IgG+APC-2nd Ab	1102
HEK-239 H_SEZ6 anti-SEZ6+APC-2nd Ab	27720

Fig. FACS

Version:3.1